

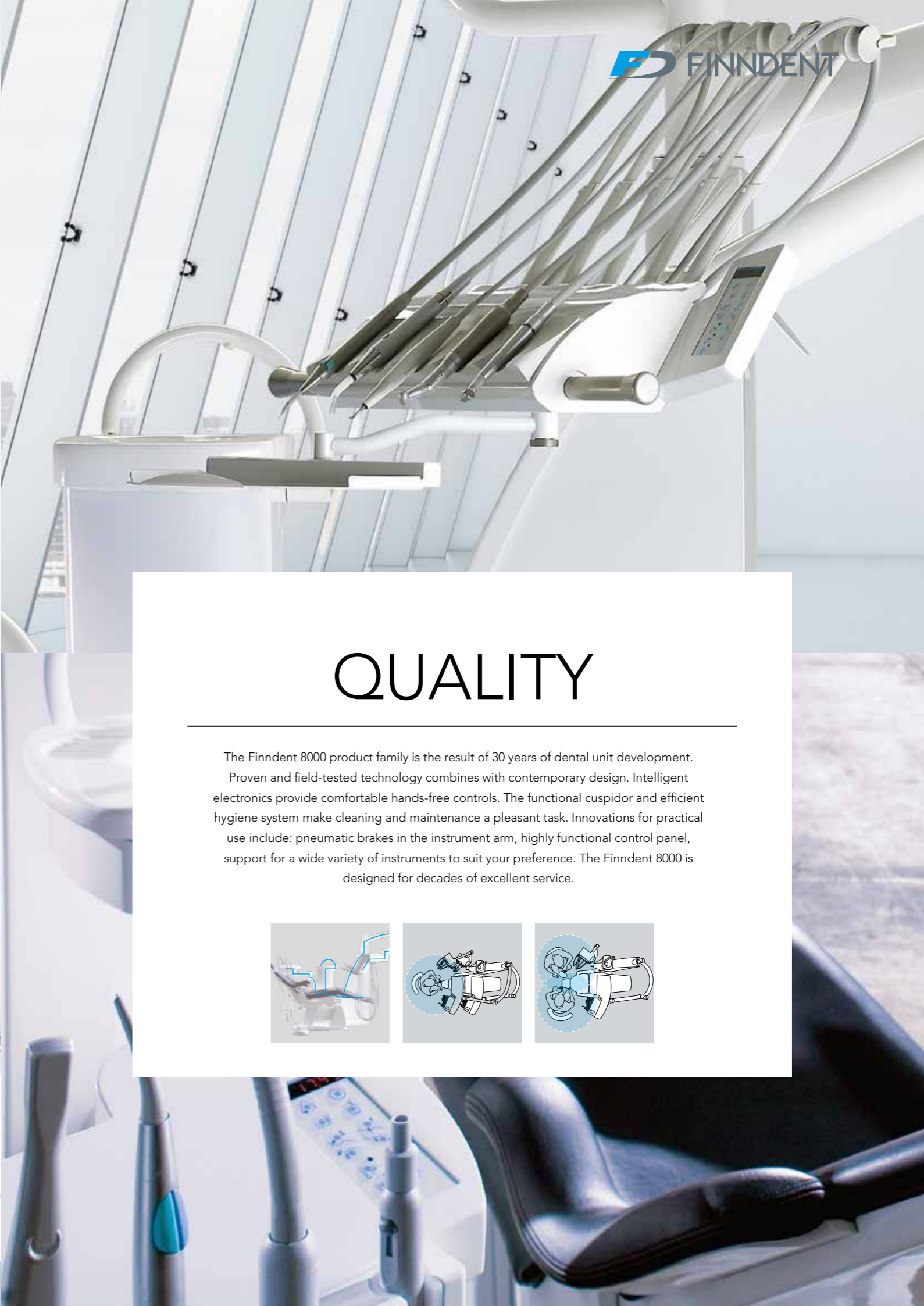


Purity. Quality. Lightness.

Designed to last

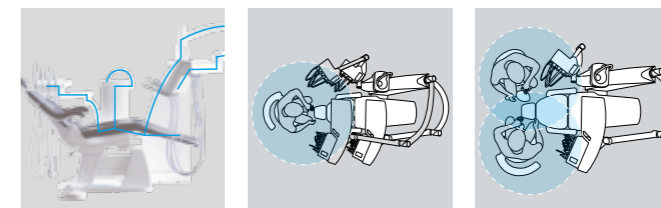
FD FINNDENT

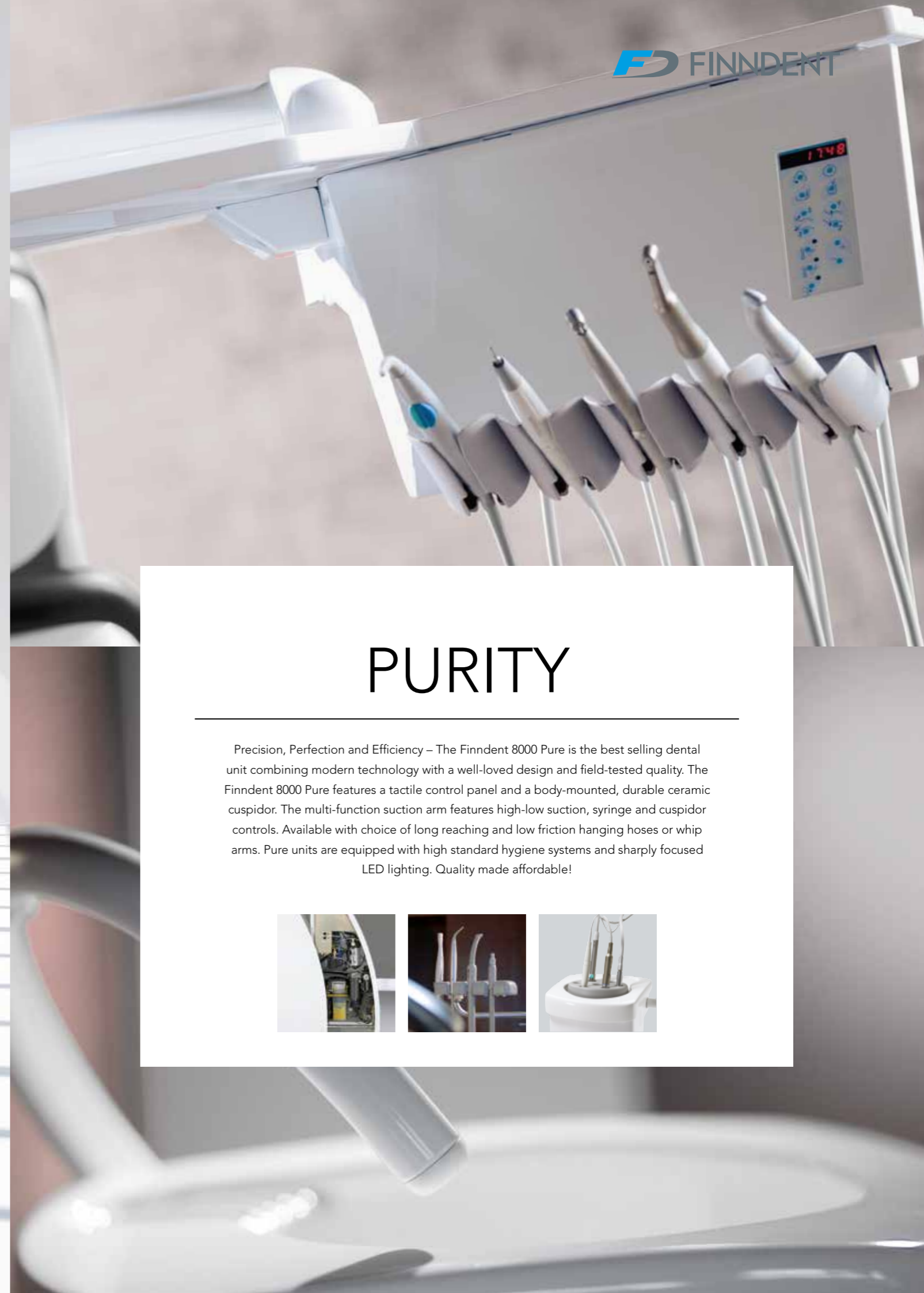
FD-8000 Dental Units



QUALITY

The Finndent 8000 product family is the result of 30 years of dental unit development. Proven and field-tested technology combines with contemporary design. Intelligent electronics provide comfortable hands-free controls. The functional cuspidor and efficient hygiene system make cleaning and maintenance a pleasant task. Innovations for practical use include: pneumatic brakes in the instrument arm, highly functional control panel, support for a wide variety of instruments to suit your preference. The Finndent 8000 is designed for decades of excellent service.

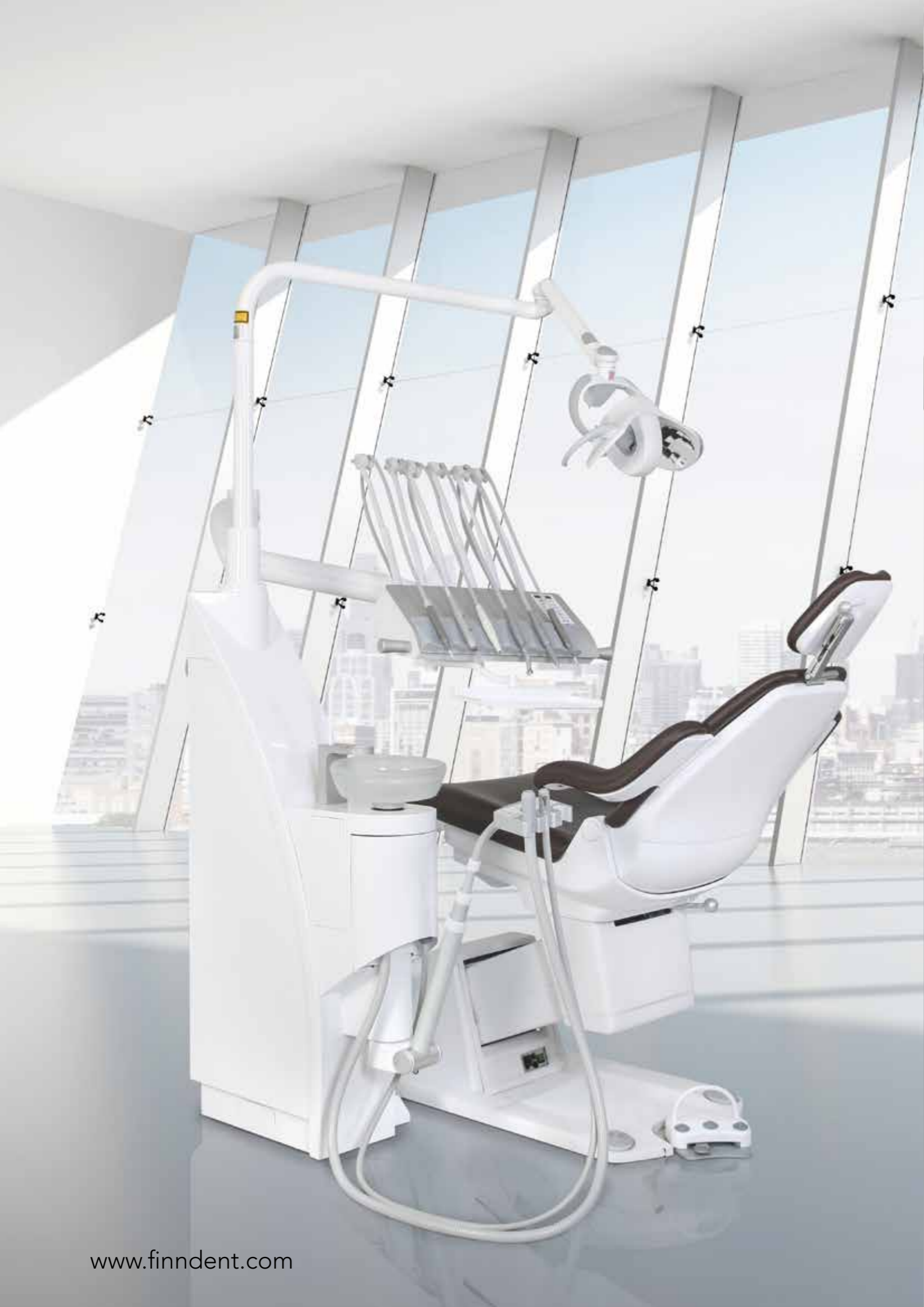




PURITY

Precision, Perfection and Efficiency – The Finndent 8000 Pure is the best selling dental unit combining modern technology with a well-loved design and field-tested quality. The Finndent 8000 Pure features a tactile control panel and a body-mounted, durable ceramic cuspidor. The multi-function suction arm features high-low suction, syringe and cuspidor controls. Available with choice of long reaching and low friction hanging hoses or whip arms. Pure units are equipped with high standard hygiene systems and sharply focused LED lighting. Quality made affordable!





LIGHTNESS

The newest member of the Finndent product family is the 8000 Plus. It allows more versatility and exclusive options for discerning dentists. The elegantly redesigned 6-place instrument bridge is made of brushed aluminium. The 8000 Plus comes with a contemporary glass cuspidor and telescopic suction arm with new 3+ assistant side control panel for total cuspidor and patient chair control. Optional rotating cuspidor and automated cleaning system meet the standards of a high-end clinic. This robust unit can also be equipped with monitor, X-ray and even a Zeiss microscope.

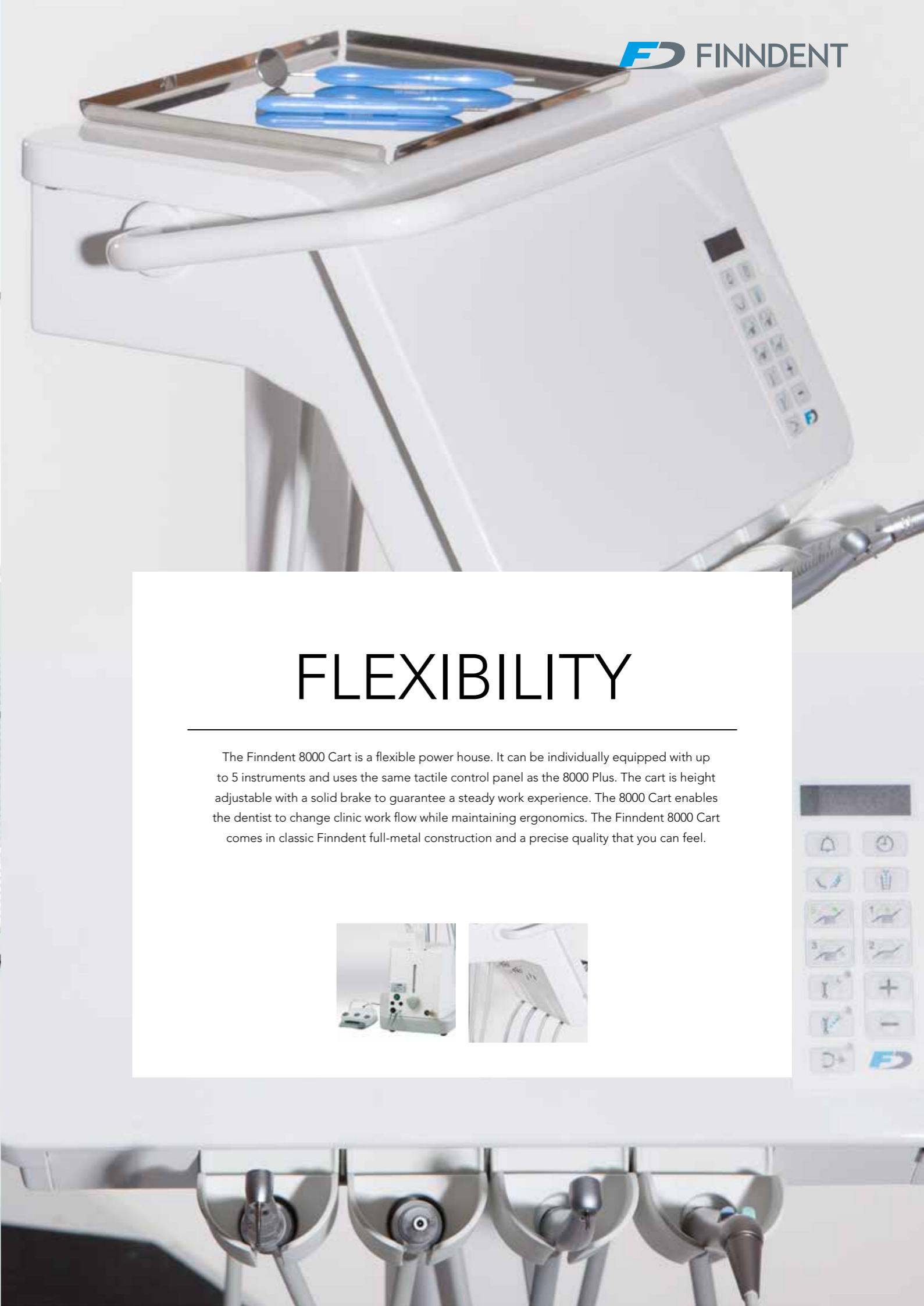




UNIQUE

All good things come from above. The 8000 P1 is a ceiling mounted dental unit that frees floor space for improved working ergonomics and optimised clinic work flow. This unique Finndent innovation provides freedom of clinic design and for shared work spaces - the symmetry of the 8000 P1 allows for right-, left- or ambidextrous installations in any ceiling type. A suction arm system can be mounted in the cabinet or on the back of the patient chair for left or right side use. The Finndent 8000 P1 can be delivered with the new six-place whip arm instrument bridge. Maximum functionality in the minimum space.

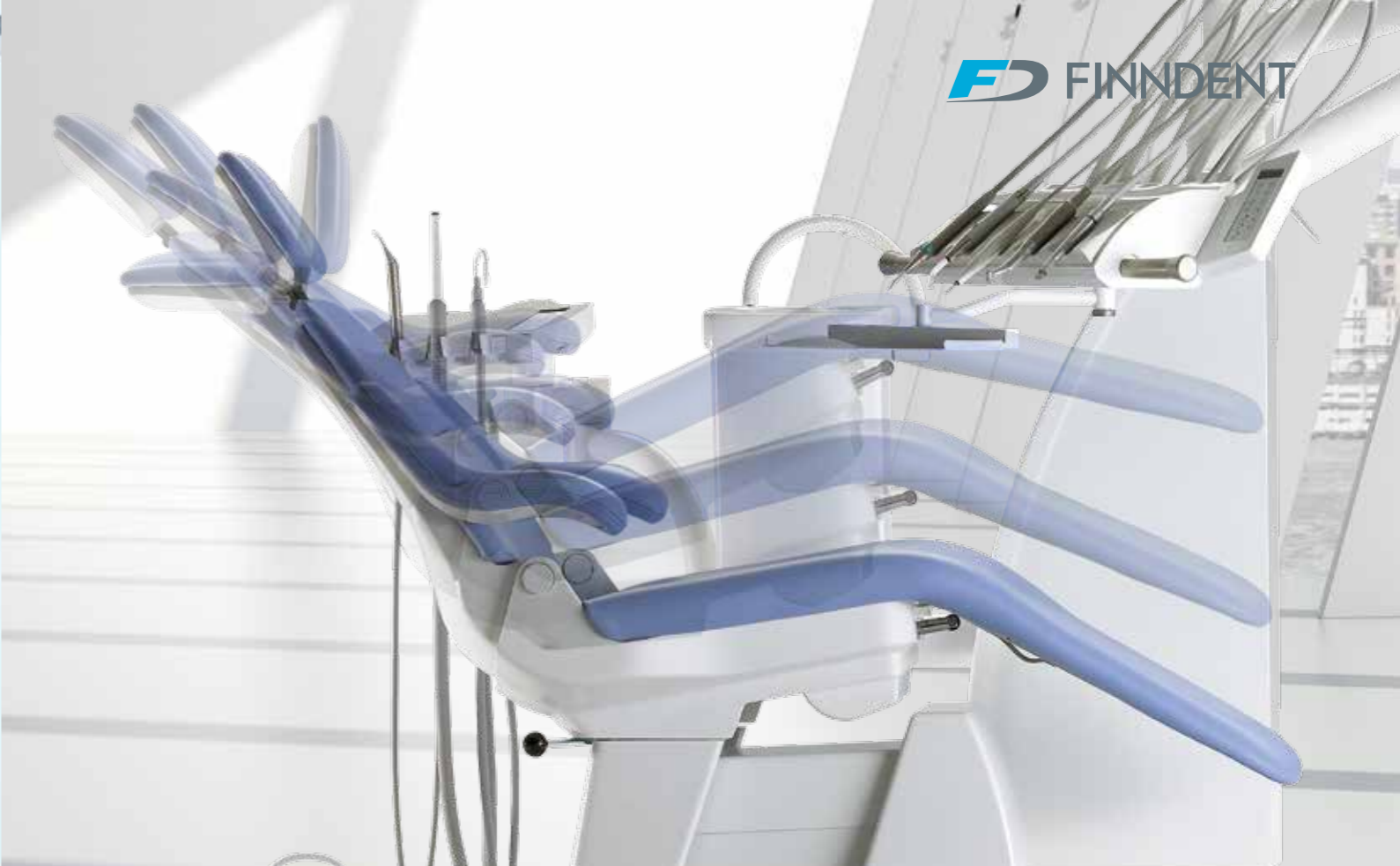




FLEXIBILITY

The Finndent 8000 Cart is a flexible power house. It can be individually equipped with up to 5 instruments and uses the same tactile control panel as the 8000 Plus. The cart is height adjustable with a solid brake to guarantee a steady work experience. The 8000 Cart enables the dentist to change clinic work flow while maintaining ergonomics. The Finndent 8000 Cart comes in classic Finndent full-metal construction and a precise quality that you can feel.





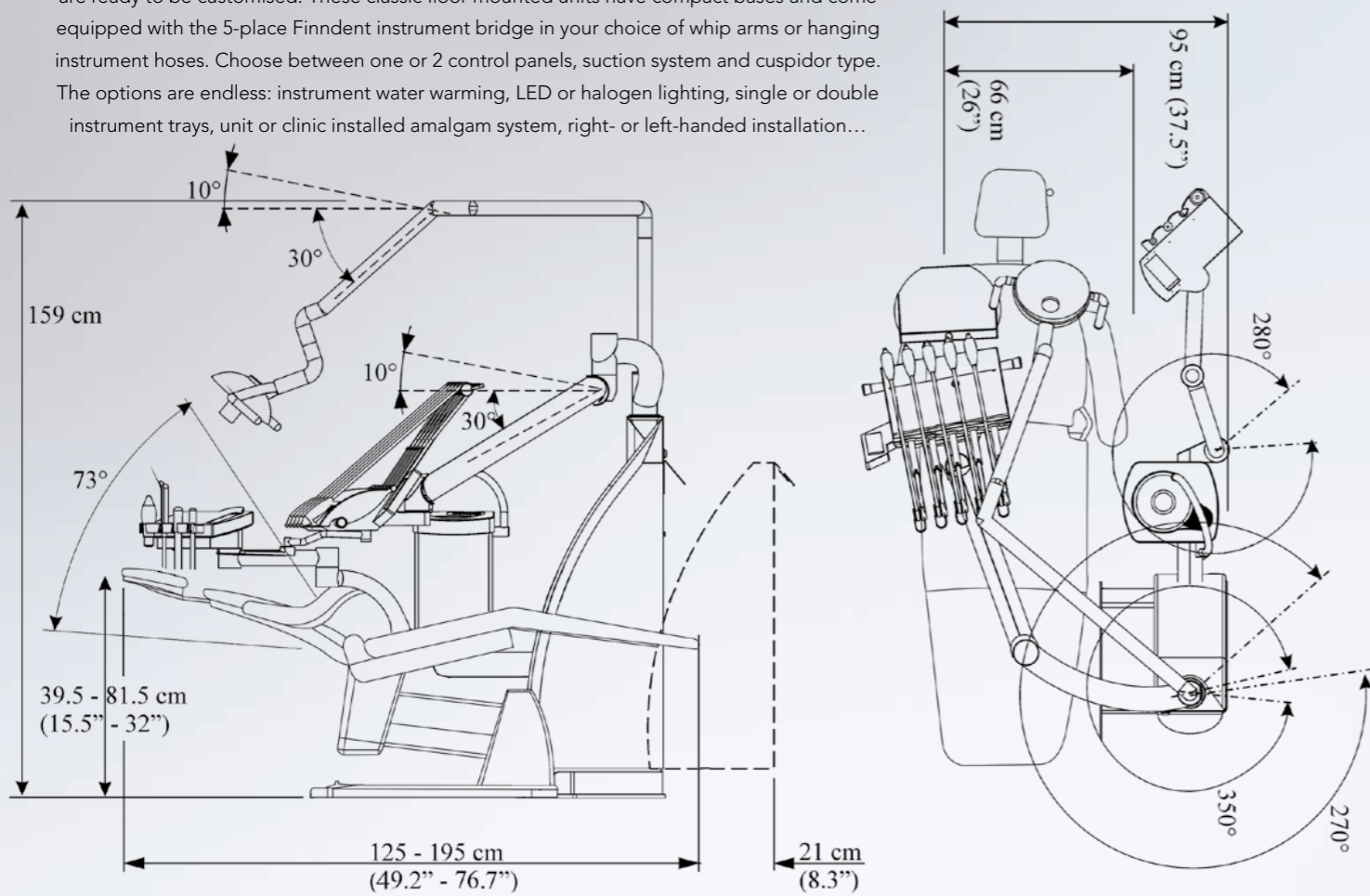
STABILITY

Optimised for patient well-being - from whatever angle you look. The FD 5000 and FD 3600 chairs are a perfectly tuned match for Finndent dental units. Super comfortable during lengthy procedures and with optional Tempura upholstery. The FD 5000 comes with a rotating seat, allowing for even easier patient seating access. The newest FD 3600 and FD 5000 chairs are equipped with a new mechanics for even higher treatment positions and the foot control is now nested in the base of the chair in its own bay. There are countless standard and special upholstery textures and colours, all made from easy to clean material. Designed to last.

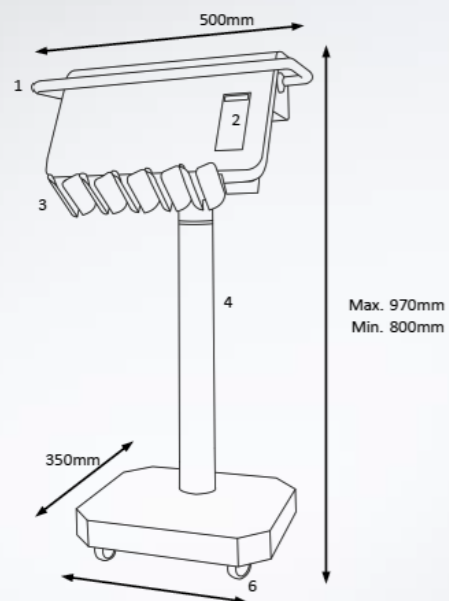


FD 8000 B1/B2

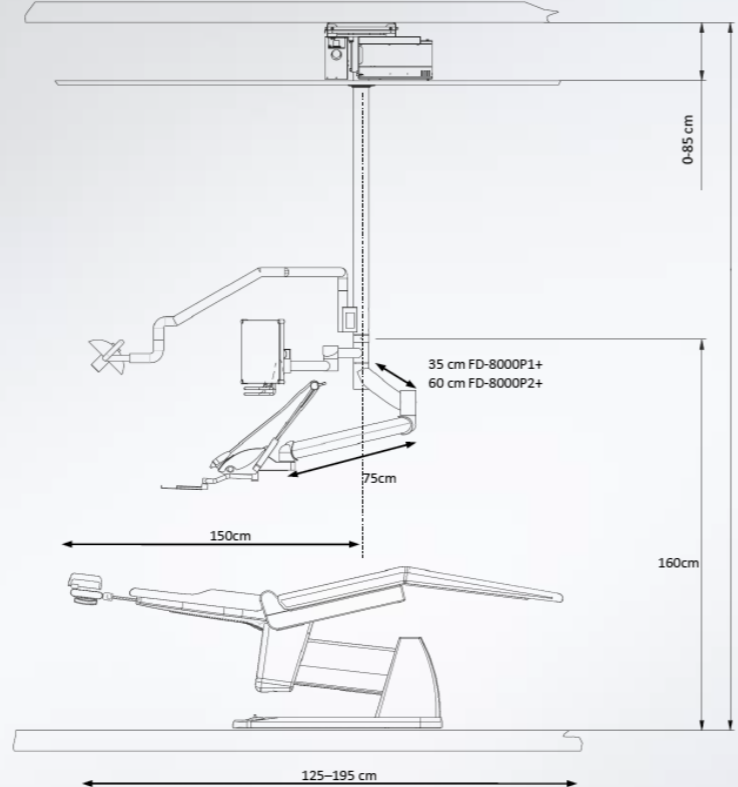
Yes, it's possible. When a clinic requires a special solution the Finndent 8000 B1/B2 models are ready to be customised. These classic floor mounted units have compact bases and come equipped with the 5-place Finndent instrument bridge in your choice of whip arms or hanging instrument hoses. Choose between one or 2 control panels, suction system and cuspidor type. The options are endless: instrument water warming, LED or halogen lighting, single or double instrument trays, unit or clinic installed amalgam system, right- or left-handed installation...



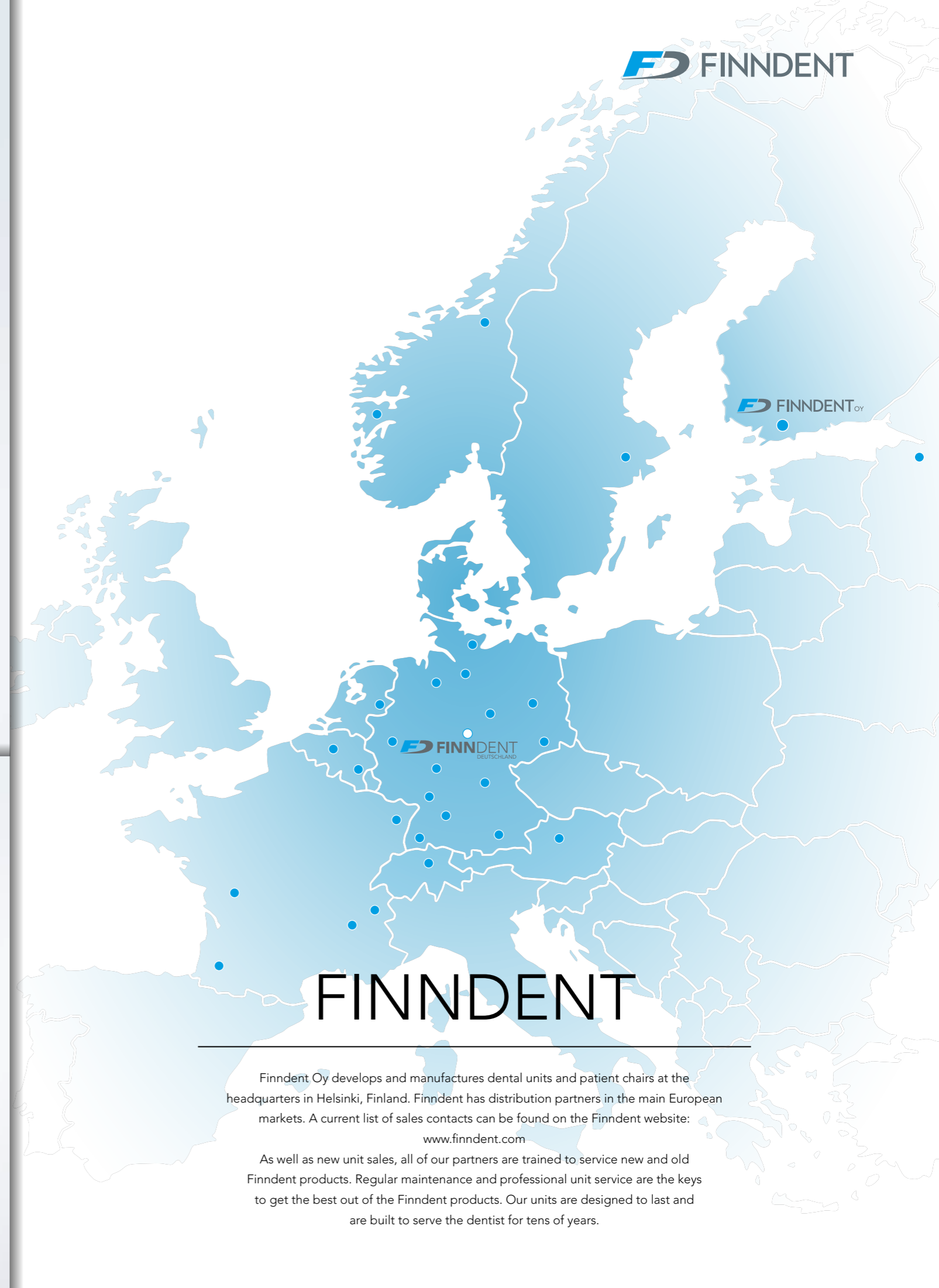
FD 8000 Cart



FD 8000 P1



www.finndent.com



FINNDENT

Finndent Oy develops and manufactures dental units and patient chairs at the headquarters in Helsinki, Finland. Finndent has distribution partners in the main European markets. A current list of sales contacts can be found on the Finndent website: www.finndent.com

As well as new unit sales, all of our partners are trained to service new and old Finndent products. Regular maintenance and professional unit service are the keys to get the best out of the Finndent products. Our units are designed to last and are built to serve the dentist for tens of years.

FINNDENT

DESIGN
FROM
FINLAND

Dentists around the world have been impressed by our over 30 years of industry experience, by our innovative dental unit development and by our ambition to provide the best possible support. We believe that our Made in Finland products provide world-class precision, ergonomics, durability and contemporary design that are the cornerstones to support the handwork of the dentist. The dentist must concentrate on patients – so we concentrate on providing the finest working support through perfect products and design innovations.

All Finndent products are made in Finland and built to order in our factory in Helsinki, Finland. Our individually crafted products fulfil the highest quality standards and continue to delight the user every day. Finndent products. Designed to last.

FINNDENT Oy

Niittylänpolku 16 | 00620 Helsinki | Finland | +358 20 743 5115 | info@finndent.com | www.finndent.com